



AGM G2

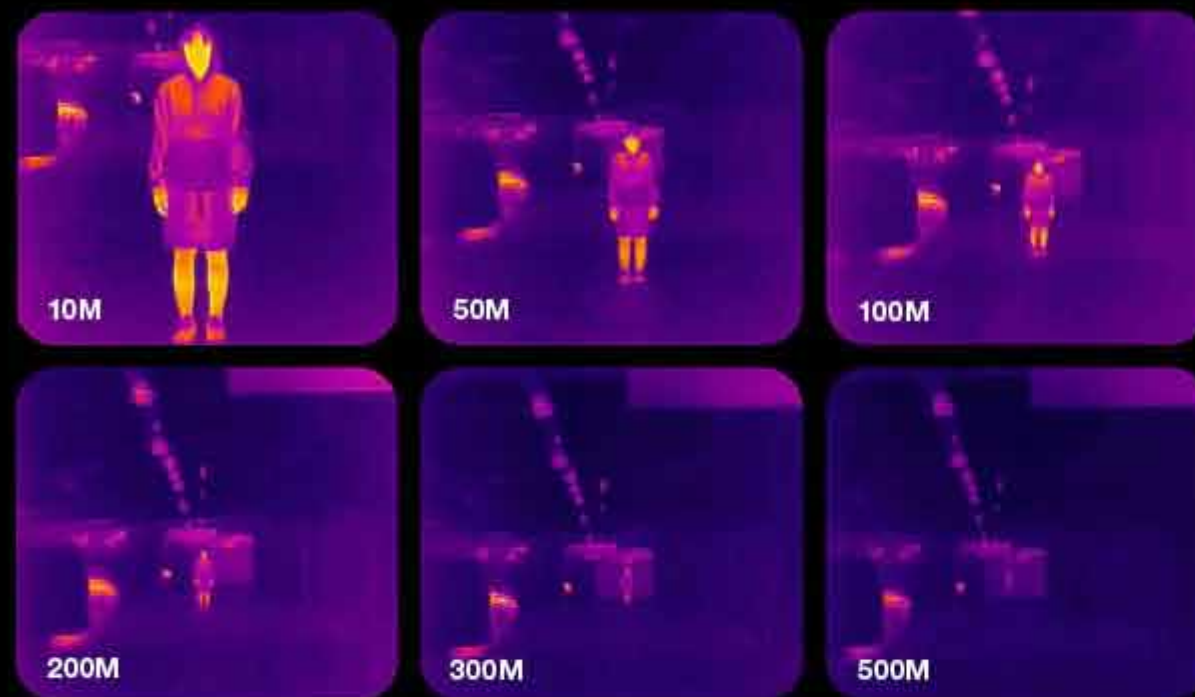
GUARDIAN

500 Meters in Thermal Sight.

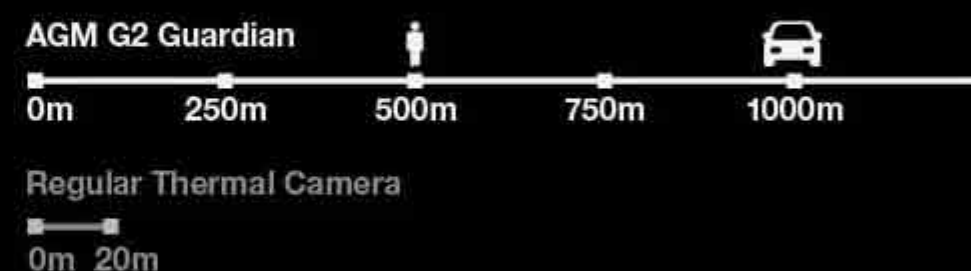
Welcome to the new frontier

The most ambitious
and disruptive rugged device,
designed to raise the bar
for the whole outdoor
smartphone industry
bringing features never seen before,
welcome to the new standard.

DETECTION RANGE UP TO



Equipped with AGM latest innovation, an integrated long range thermal monocular that allows users to detect far away heat signatures even through smoke, fog or in total darkness.



BUILT FOR THE LONG RUN, BUILT FOR THE LONG RANGE

A powerful 10mm objective lens that combines with our professional grade 12 μ m thermal imaging sensor to bring long range detection like never before in a smartphone.



FURTHER, CLEARER

Engineered to deliver from far away,
first smartphone equipped with
a 10 mm thermal lens
that provides a
17.5°x13.2° FOV (Field of view) .



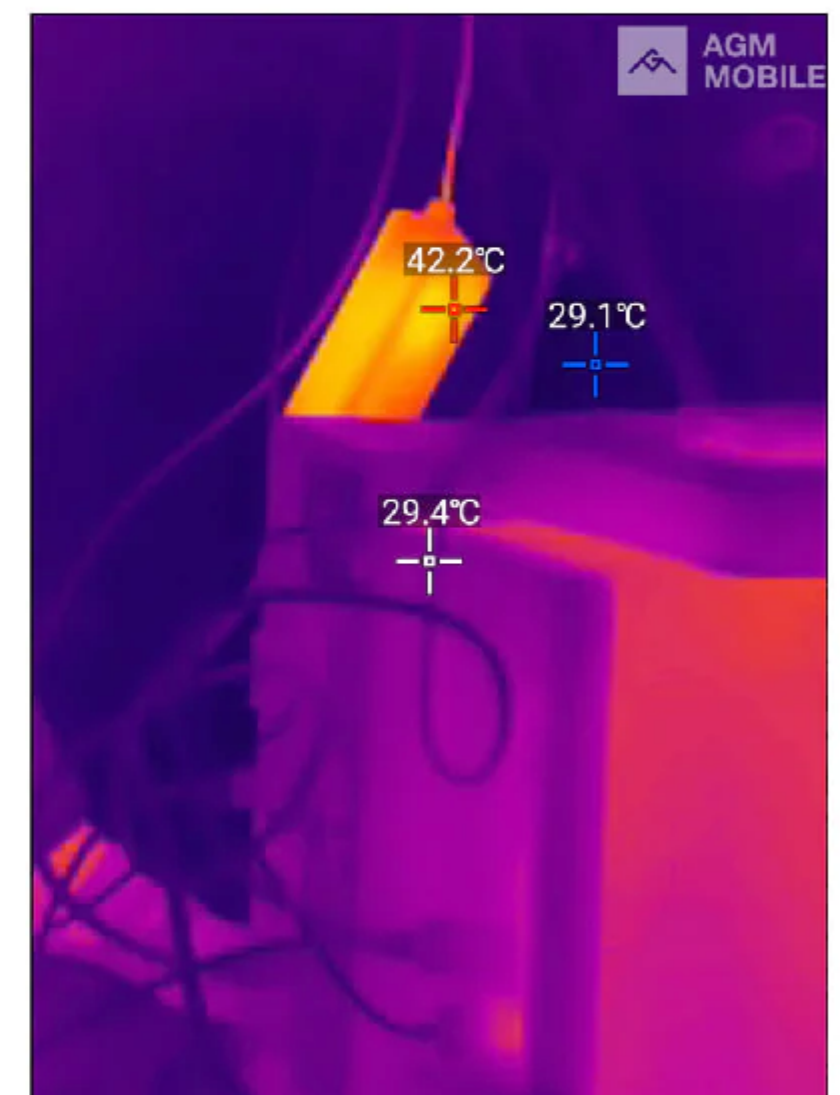
AGM G2 Guardian
10mm Lens

Regular
Thermal Camera

ENHANCED MEASUREMENTS, EFFICIENT INSPECTIONS

AGM Guardian measures temperatures
in an accurate way from 0 °C to 150 °C,
while doing it from a safe distance
that can range between 2m and 8m.

It also displays maximum, minimum
and average temperatures live on screen.
Choose between different
measurement modes, like dots or lines,
according to your preferences.



ADJUSTABLE FOCUS

Look first, then leap.
Rely on Guardian 5.6x magnification
and choose your favorite focus mode
between **Automatic** or **Manual**
to get a clear image
under different circumstances.



Automatic focus mode - tap to focus



Manual focus mode - drag focus ruler

500 METERS

IN THERMAL SIGHT

 Thermal Monocular



Detection range

10_{mm}

 Objective lens



17.5°x 13.2°

FOV (Field of View)

12μm

Sensor

256x192

Resolution

0°-150°

Temperature measurement
(max min avg)

5.6x Magnification



Automatic

Focus



Manual

Focus

25FPS

 Refresh rate

HIGH DEFINITION SENSOR

Guardian sensor counts with 256*192 resolution that paired with a FHD+ screen provides great quality image and thermal sensitivity under all kinds of circumstances.



FLAWLESS PERFORMANCE

Fueled by the new generation Qualcomm® QCM6490, a powerful 6nm industrial grade octacore 2.7Ghz 5G chipset, with a fused AI-accelerator architecture & Wi-Fi 6/6E capabilities, specially designed for industrial systems that teams up with 8GB/12GB RAM memory to bring next level performance even while using high-end apps or multitasking.



Geekbench5 Score:



■ Multi-Core Score

■ Single-Core Score

EYE-CATCHING 120Hz DISPLAY

Expand your view, filling up documents, gaming, or navigating through maps is much more convenient using this 120Hz large 6.58" screen that also delivers FHD+ high resolution(2408x1080), providing a seamless and smooth visual experience with reduced motion blur.

Equipped with Corning Gorilla Glass, a chemically strengthened screen that is able to resist the deep scratches that otherwise would cause the glass to break.



ALL AROUND CAMERA SYSTEM

Thermal imaging camera

Wide range of applications like: Search and rescue, hiking, hunting, patrolling, law enforcement, anti-smuggling, construction...

108MP Rear camera

Zoom at will to take pictures far away and take advantage of the big pixel sensor that will reduce the picture noise.

32 MP Front camera

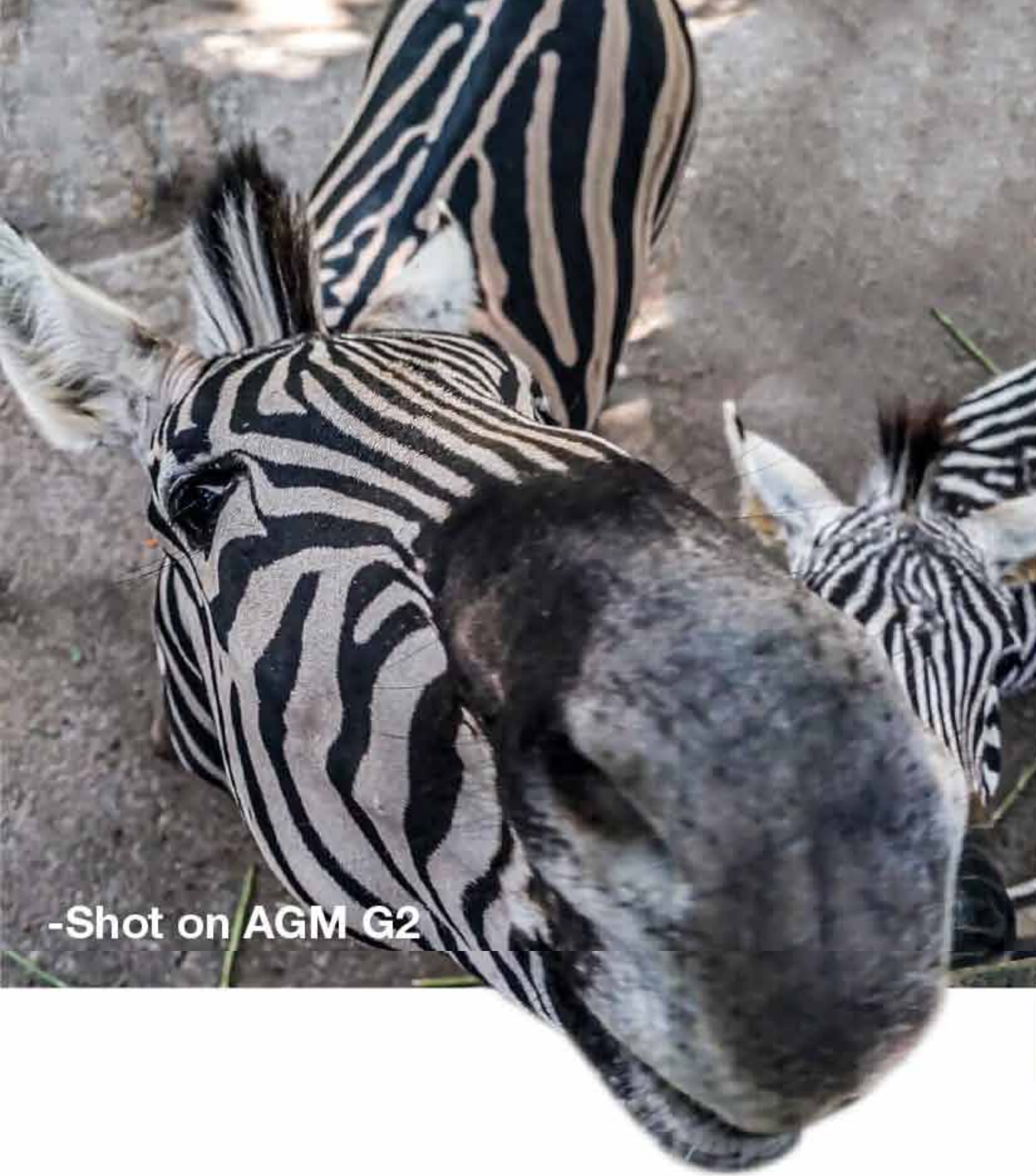
Let yourself go and shoot some stunning selfies or just enjoy high quality video calls.

20MP Infrared night vision camera

Shoot pictures or videos during the darkest nights and explore at will, no matter when.

2MP Macro camera

Beauty is hidden within little details, get closer than ever before, discover a new world that has been hiding in plain sight.



-Shot on AGM G2

CLEARER THAN EVER

Our best rear camera so far, the **108 MP Samsung sensor** allows you to capture high resolution pictures with vivid details.

STORE MORE

Finally get some peace of mind with **256GB ROM** storage capacity that you can even further upgrade using a **TF card up to 512GB**, in the end no one want to constantly bother freeing up storage on a regular basis, just save your precious data and memories at ease.





109dB

ICONIC SOUND

We went even one step further for G2 by delivering 109dB of sound with SmartPA technology to enhance sound quality and a new convex design that further improve its durability, waterproof capabilities and scratch resistance.



POWER THAT LASTS

A massive 7000mAh battery that joins forces with the new generation Qualcomm® QCM6490 chipset and Wi-Fi 6/6E capabilities to provide an energy consumption efficiency leap that allows your phone to keep going and going.



AS TOUGH AS THEY COME

IP68/IP69K/MIL-STD-810H as always, Guardian is able to survive drops from 1.5m onto concrete, is waterproof against different liquids and is also able to resist 99% dust environments.

DROP-PROOF

It can take wild drops and crashes from 1.5 meters in height.



WATERPROOF

It can survive at least 30 minutes under 1.5 meters depth of water.



DUSTPROOF

It blocks 99% of dust, cement, lime, or industrial powders.



CHARGING MADE SIMPLE

Enjoy an effortless and easy way of charging that keeps your battery safe and doesn't damage its life cycle.



SAFETY ALWAYS COMES FIRST



SOS SIGNAL

SOS SIGNAL

We certainly hope that you will never need it, but it's better to be ready just in case, Guardian SOS signal can be activated by pressing five times the main button, it will **automatically call your local emergency number (default 112/911)**. We also added **AGM SOS** that can be activated through the customizable button and will trigger an **acoustic and visual alarm**, making use of the **speaker and torch**. Functions that can make a difference.



PRECISE GPS

PRECISE GPS

Wide range of applications like an accurate use of maps, locate a person or a position with an extremely low margin of error of 3m thanks to **dual-frequency GPS**. An accurate positioning is both useful during our daily life and in case of emergency.

GREEN CERTIFICATIONS

It's not just about certifications, smartphones made to last avoid unnecessary electronic waste and help to keep our planet cleaner.



GLOBAL BANDS

Worldwide connectivity.
AGM Guardian makes use of 5G/4G/3G/2G
mobile networks from major carriers
all around the world,
enjoy worldwide reliable connectivity.

5G
n1/n2/n3/n5/n7/n8/n28/n41/n66/n71
/n77/n78/n79

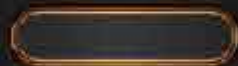
2/3/4G
GSM: 850/900/1800/1900
CDMA: BC0/BC1/BC10
WCDMA: B1/B2/B4/B5/B6/B8/B19
LTE-FDD: B1/B2/B3/B4/B5/B7/B8
/B12/B13/B17/B18/B19/B20/B25
/B26/B28AB/B66/B71
LTE-TDD: B34/B38/B39/B40/B41

Please check your local mobile
carriers providing the following
frequencies:

MORE

TO EXPLORE

**FINGERPRINT
SENSOR**



**DUAL-SIM
NANO**

TF/SIM CARD

**100 LUMENS
TOP TORCH**



**NFC,
3.5 JACK...**

