

AGM G-SERIES G2 PRO

Dare to See Beyond.



Welcome to the new frontier

The most ambitious
and disruptive rugged device,
designed to raise the bar
for the whole outdoor
smartphone industry
bringing features never seen before,
welcome to the new standard.

PROFESSIONAL THERMAL IMAGER

Solid seamless performance and detailed live image on display thanks to the built-in 256*192 resolution thermal sensor that runs at 25 FPS to deliver a smooth image both for pictures and videos.

BUILT FOR THE LONG RUN, BUILT TO DETECT

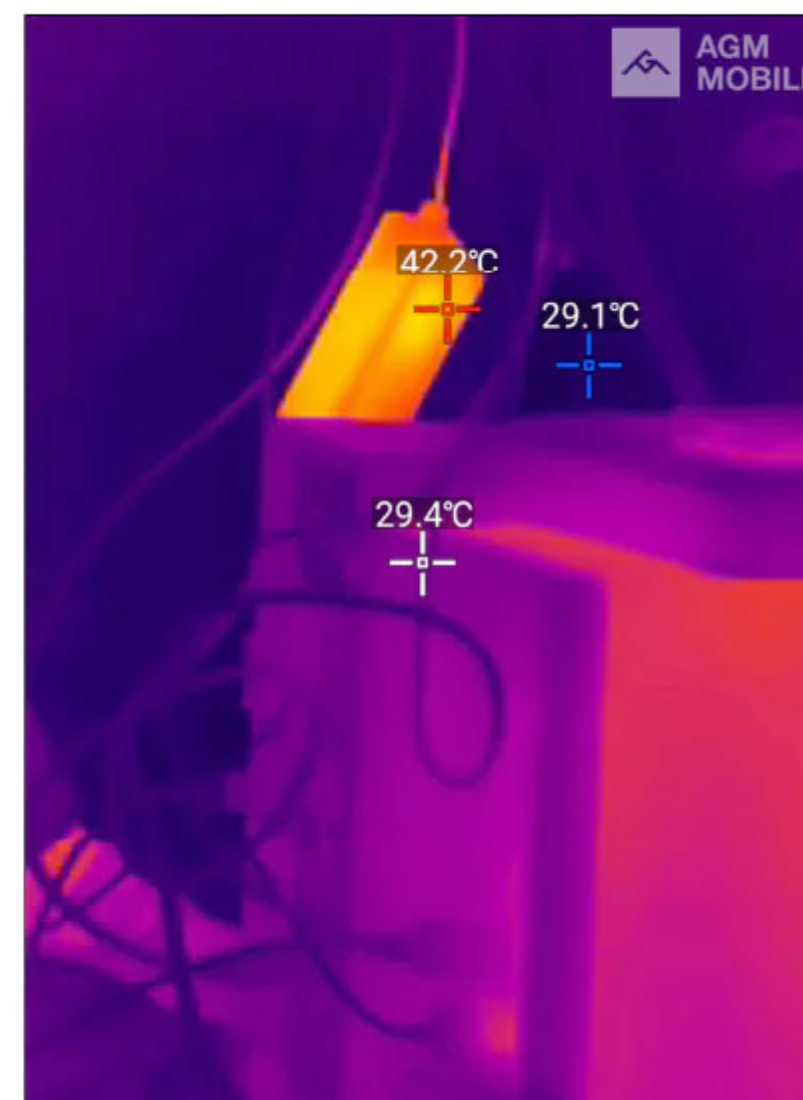
A powerful thermal camera built with our professional thermal imaging sensor to bring heat detection like never before in a smartphone.



ENHANCED MEASUREMENTS, EFFICIENT INSPECTIONS

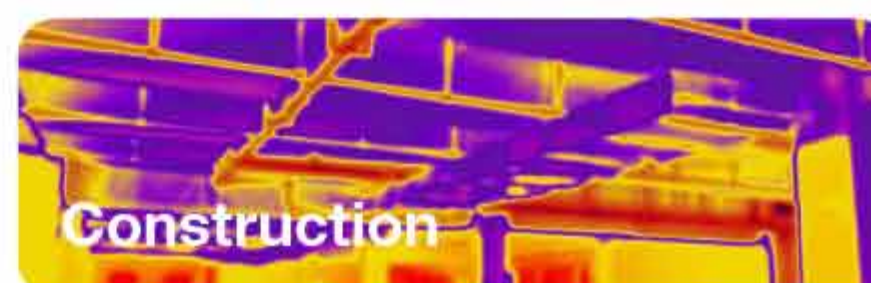
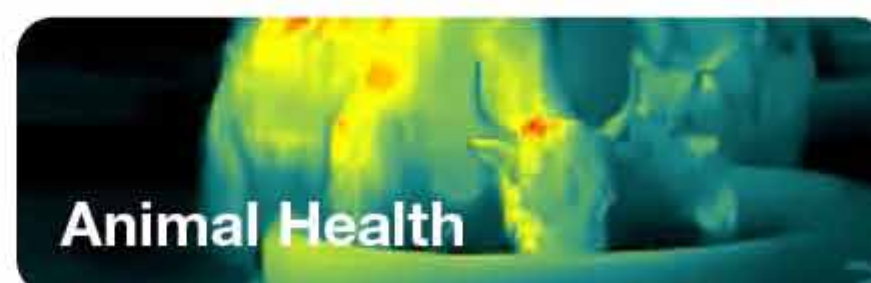
Effortlessly measure temperatures in a wide range that goes from -20°C to 150°C or 100°C to 550°C . G2 Pro thermal imager sensor counts with 50mK sensitivity that is able to create noise free images.

It also displays maximum, minimum and average temperatures live on screen. Choose between different measurement modes, like dots or lines, according to your preferences.



HIGH DEFINITION SENSOR

The 256*192 resolution sensor in G2 PRO, combined with its FHD+ screen, provides great quality image and thermal sensitivity under all kinds of circumstances.



FLAWLESS PERFORMANCE

Fueled by the new generation Qualcomm® QCM6490, a powerful 6nm industrial grade octacore 2.7Ghz 5G chipset, with a fused AI-accelerator architecture & Wi-Fi 6/6E capabilities, specially designed for industrial systems that teams up with 8GB RAM memory to bring next level performance even while using high-end apps or multitasking.



Geekbench5 Score:



EYE-CATCHING 120Hz DISPLAY

Expand your view, filling up documents, gaming, or navigating through maps is much more convenient using this 120Hz large 6.58' screen that also delivers FHD+ high resolution(2408x1080), providing a seamless and smooth visual experience with reduced motion blur.

Equipped with Corning Gorilla Glass, a chemically strengthened screen that is able to resist the deep scratches that otherwise would cause the glass to break.



ALL AROUND CAMERA SYSTEM

Thermal imaging camera

Wide range of applications like: Search and rescue, hiking, hunting, patrolling, law enforcement, anti-smuggling, construction...

108MP Rear camera

Zoom at will to take pictures far away and take advantage of the big pixel sensor that will reduce the picture noise.

32 MP Front camera

Let yourself go and shoot some stunning selfies or just enjoy high quality video calls.

20MP Infrared night vision camera

Shoot pictures or videos during the darkest nights and explore at will, no matter when.

2MP Macro camera

Beauty is hidden within little details, get closer than ever before, discover a new world that has been hiding in plain sight.



-Shot on AGM G2

CLEARER THAN EVER

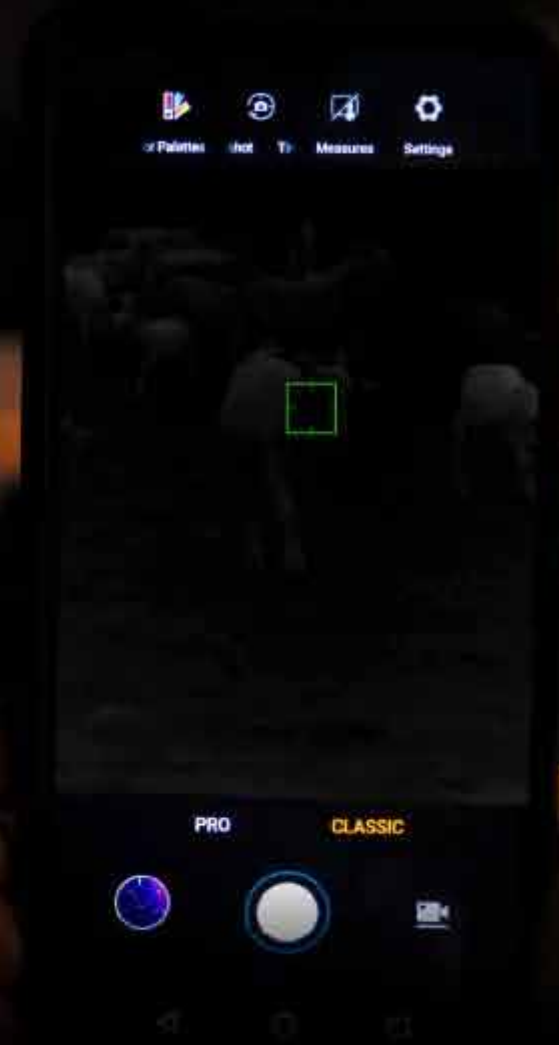
Our best rear camera so far, the 108 MP Samsung sensor allows you to capture high resolution pictures with vivid details.

INFRARED, NIGHT VISION

Shoot pictures or videos during the **darkest nights** and explore at will, no matter when.



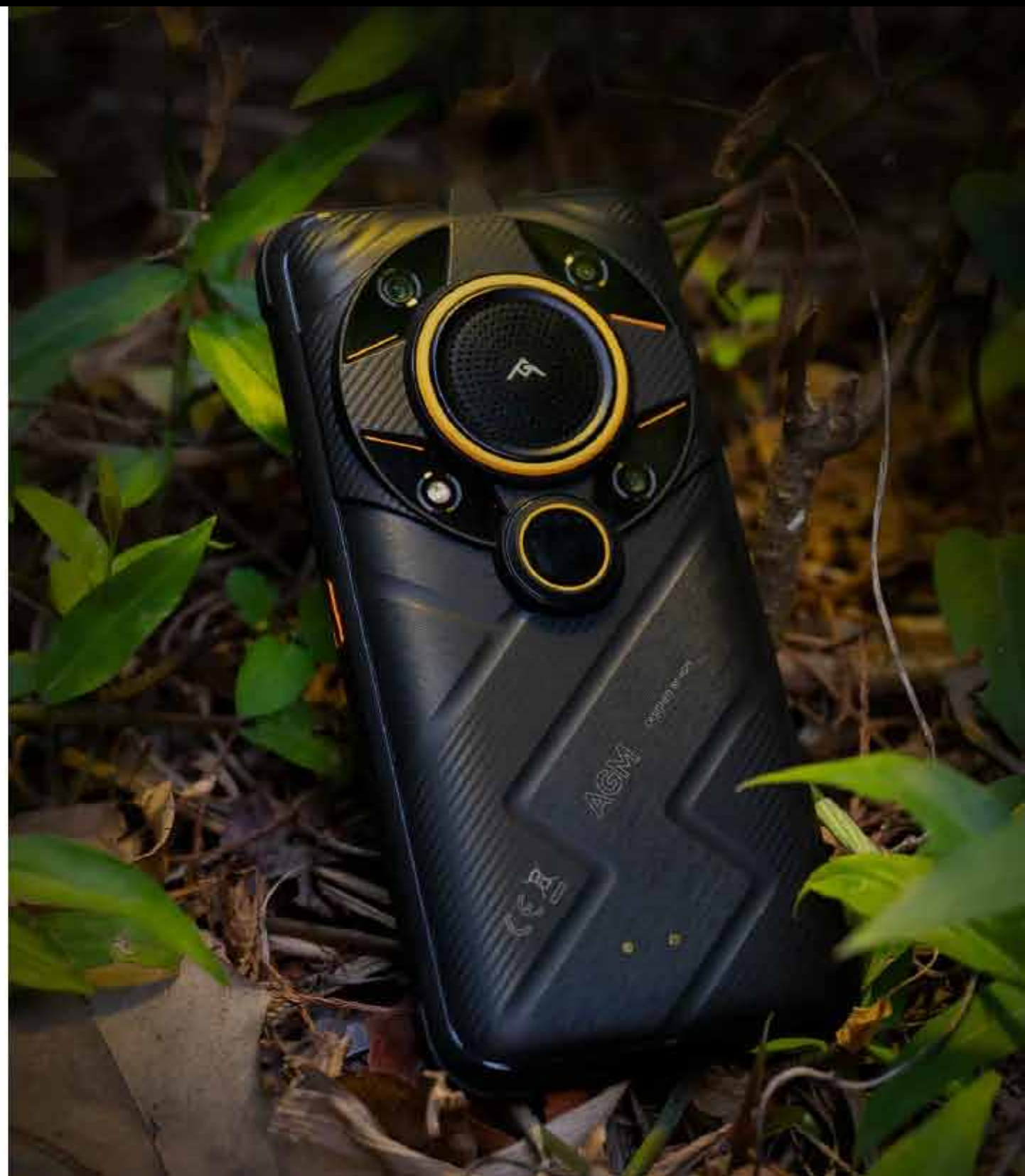
AGM G2 series
Night vision



Regular Camera

STORE MORE

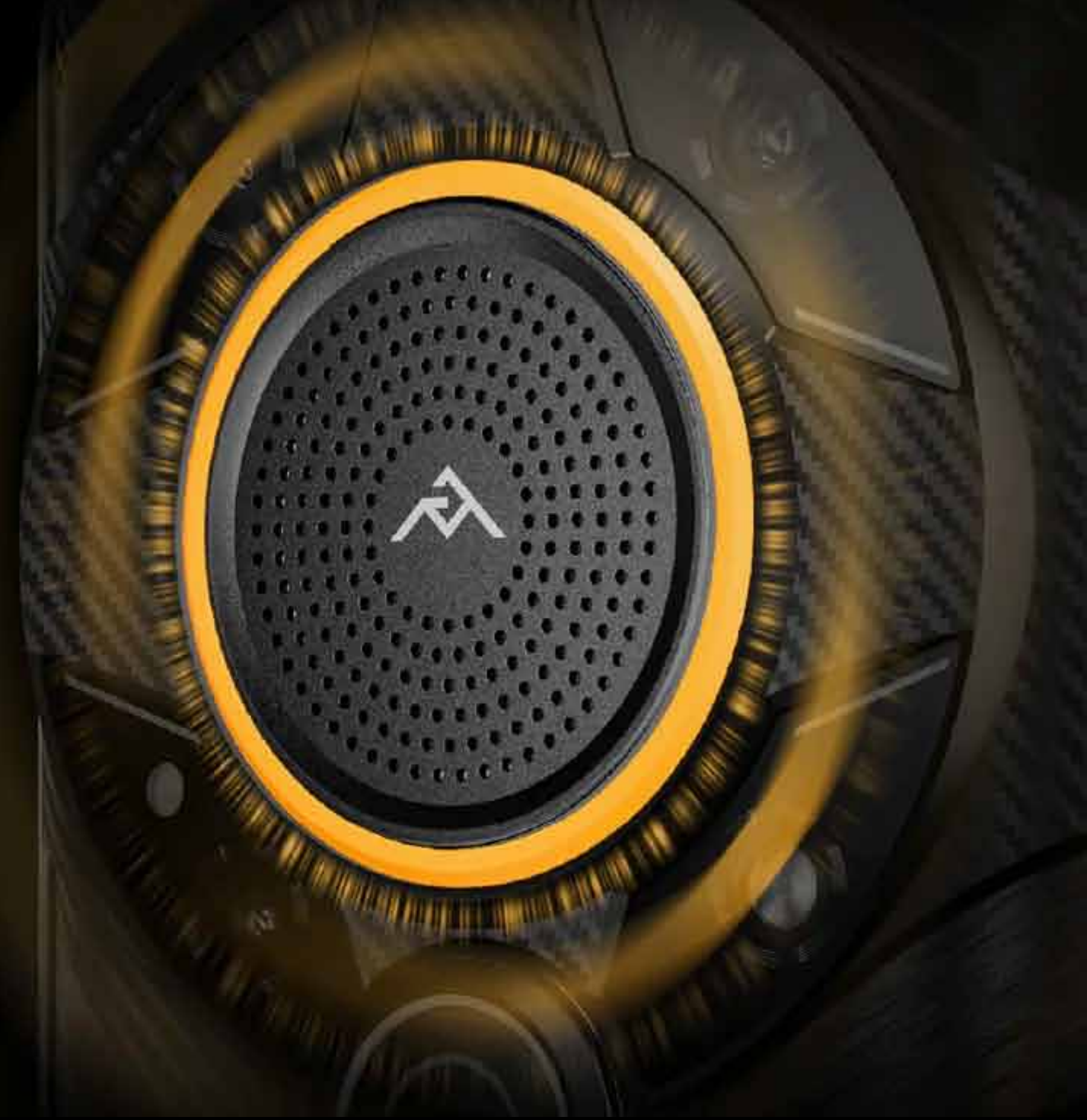
Finally get some peace of mind with **256GB ROM** storage capacity that you can even further upgrade using a TF card up to **512GB**, in the end no one want to constantly bother freeing up storage on a regular basis, just save your precious data and memories at ease.



109dB

ICONIC SOUND

We went even one step further for G2 series by delivering **109dB** of sound with SmartPA technology to enhance sound quality and a **new convex design** that further improve its durability, waterproof capabilities and scratch resistance.



POWER THAT LASTS

A massive 7000mAh battery that joins forces with the new generation Qualcomm® QCM6490 chipset and Wi-Fi 6/6E capabilities to provide an energy consumption efficiency leap that allows your phone to keep going and going.



OTG FUNCTION

REVERSE CHARGING CAPABILITY

Experience the ultimate convenience with AGM G2 Series. With its built-in OTG (On-The-Go) function, you can easily transfer files between devices without the need for a computer.

Plus, with its massive 7000mAh battery, the G2 PRO can also reverse charge your other electronics in emergency situations. Whether you're out on an adventure or working in tough environments, the G2 PRO is the perfect rugged smartphone for all your needs.



CHARGING MADE SIMPLE

Enjoy an effortless and easy way of charging that keeps your battery safe and doesn't damage its life cycle.



AS TOUGH AS THEY COME

IP68/IP69K/MIL-STD-810H as always, AGM G2 PRO is able to survive drops from 1.5m onto concrete, is waterproof against different liquids and is also able to resist 99% dust environments.

DROP-PROOF

It can take wild drops and crashes from 1.5 meters in height.



WATERPROOF

It can survive at least 30 minutes under 1.5 meters depth of water.



DUSTPROOF

It blocks 99% of dust, cement, lime, or industrial powders.



**SAFETY
ALWAYS
COMES FIRST**





SOS SIGNAL



PRECISE GPS

SOS SIGNAL

We certainly hope that you will never need it, but it's better to be ready just in case, AGM G2 PRO SOS signal can be activated by pressing five times the main button, it will automatically call your local emergency number (default 112/911). We also added AGM SOS that can be activated through the customizable button and will trigger an acoustic and visual alarm, making use of the speaker and torch. Functions that can make a difference.

PRECISE GPS

Wide range of applications like an accurate use of maps, locate a person or a position with an extremely low margin of error of 3m thanks to dual-frequency GPS. An accurate positioning is both useful during our daily life and in case of emergency.

GREEN CERTIFICATIONS

It's not just about certifications, smartphones made to last avoid unnecessary electronic waste and help to keep our planet cleaner.



GLOBAL BANDS

Worldwide connectivity.
AGM G2 PRO makes use of 5G/4G/3G/2G mobile networks from major carriers all around the world, enjoy worldwide reliable connectivity.

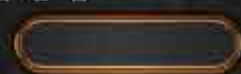
5G
n1/n2/n3/n5/n7/n8/n28/n41/n66/n71/n77/n78/n79

Please check your local mobile carriers providing the following frequencies:

2/3/4G
GSM: 850/900/1800/1900
CDMA: BC0/BC1/BC10
WCDMA: B1/B2/B4/B5/B6/B8/B19
LTE-FDD: B1/B2/B3/B4/B5/B7/B8/B12/B13/B17/B18/B19/B20/B25/B26/B28AB/B66/B71
LTE-TDD: B34/B38/B39/B40/B41

MORE TO EXPLORE

FINGERPRINT
SENSOR



DUAL-SIM
NANO

TF/SIM CARD

100 LUMENS
TOP TORCH



NFC,
3.5 JACK...

